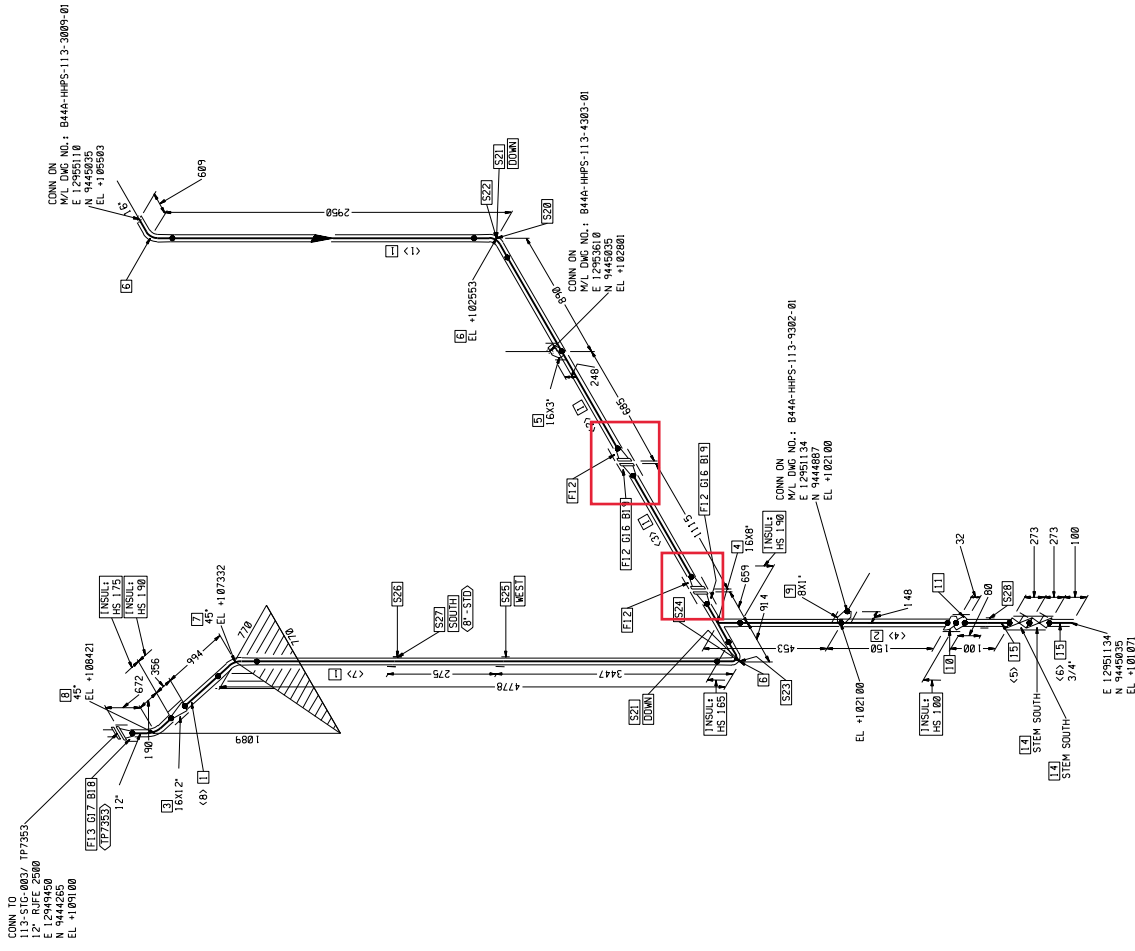




SHOP MATERIALS											
PT NO.	PART & DESCRIPTION	SIZE (IN.)	PART	OPT.	MATL CLASS	SYMBOL	QTY				
PIPE											
1	A358-347-1 EFV B36.1BW/336.1BW BE S-100	16	P	1	P0MS	P01J-0025A	7.5 M				
2	A358-347-1 EFV B36.1BW/336.1BW BE S-100	8	P	1	P0MS	P01J-0025C	0.4 M				
FITTINGS											
3	CON REDUCER A403-WP347-WX WELD B16.9 BW S-100	16X12	RC	1	P0MS	P27J-0061Z	1				
4	RED. TEE A403-WP347-WX WELD B16.9 BW S-100 X	16X8	TR	1	P0MS	P24J-00775	1				
5	OLET A182-F347 M55 SP-97 BW S-100 X S-805	16X3	L	1	P0MS	P31K-0087V	1				
6	90 DEG ELBOW A403-WP347-WX WELD B16.9 BW LR	16	9L	1	P0MS	P02J-00257	3				
7	45 DEG ELBOW A403-WP347-WX WELD B16.9 BW LR	16	4L	1	P0MS	P03J-0024Z	1				
8	45 DEG ELBOW A403-WP347-WX WELD B16.9 BW LR	12	4L	1	P0MS	P03J-0024K	1				
9	OLET A182-F347 M55 SP-97 BW S-100 X S-160	8X1	L	1	P0MS	P31K-0087H	1				
10	CAP A403-WP347-S SMLS B16.9 BW S-100	8	CA	1	P0MS	P29J-0022R	1				
11	OLET ON CAP A182-F347 M55 SP-97 BW CAP-WP58 SCH 80 S-160	3/4X3/4	LC	4217	P0MS	P36K-0002H	1				
FLANGES											
12	WN A182-F347 2500# STD DNG RJ S-100	16	F	1	P0MS	P61K-00625	4				
13	WN A182-F347 2500# B16.5 RJ S-100	12	F	1	P0MS	P61K-0061Y	1				
VALVES											
14	GATE VALVE A182-F347 2500# API 602 BW S160 TRIM 55347 AG-BG-0581 TYPICAL FLUID D-2 FLUID-5	3/4	V	2609	P0MS	P81K-0081Y	2				
FIELD MATERIALS											
PT NO.	PART & DESCRIPTION	SIZE (IN.)	PART	OPT.	MATL CLASS	SYMBOL	QTY				
PIPE											
15	A312-TP347 SMLS B36.1BW/336.1BW PE S-160	3/4	P	1	P0MS	P01J-0025B	0.2 M				
GASKETS											
16	RING JOINT SS TP347 2500# B16.20 STD DNG RJ	16	G	1	P0MS	P75J-00153	2				
17	RING JOINT SS TP347 2500# B16.20 B16.5 RJ OCTAGONAL TYPE	12	G	1	P0MS	P75J-0006Z	1				
BOLTS											
18	A453-660-C/A453-660-C B1.1 BUN STUO W/ 2 HWY HEX NUTS 655.0MM BOLL LENGTH	2.3/4	B	1	P0MS	P005-030H1	12				
19	A453-660-C/A453-660-C B1.1 BUN STUO W/ 2 HWY HEX NUTS 655.0MM BOLL LENGTH	2.1/2	B	1	P0MS	P005-030DX	48				
SUPPORTS											
20	SPECIAL PIPE SUPPORT	16			P0MS	113-SP5-0303	1				
21	SLIDE STUOL	16			P0MS	SI40A-H16-8400	2				
22	SPECIAL SUPPORT FOR SPRING	16			P0MS	113-CH5-0034	1				
23	SPECIAL PIPE SUPPORT	16			P0MS	113-SP5-0304	1				
24	SPECIAL SUPPORT FOR SPRING	16			P0MS	113-CH5-0035	1				
25	ADJUSTABLE STUOL	16			P0MS	SI42B-H16-86000	1				
26	SPECIAL PIPE SUPPORT	16			P0MS	113-SP5-0319	1				
27	SINGLE TRUNION FOR VERTICAL PIPE	16			P0MS	SI35A-H18-03000	1				
28	BRACES	3/4			P0MS	SS201A-H08	1				

CUT PIPE LENGTH		SIZE (IN.)		REMARKS	
PIECE NO.	LENGTH (MM)	SIZE (IN.)		REMARKS	
(1)	1720	16		611	
(2)	486	16		330	
(3)	1800	3/4		1000	
(4)	3915	16		740	



FOR CONSTRUCTION		Contractor 108 Code 8-6495-28		NSRP		NSRP		NSRP		NSRP	
HPPS-113-3009-02		POMS		POMS		POMS		POMS		POMS	
POMS		POMS		POMS		POMS		POMS		POMS	
POMS		POMS		POMS		POMS		POMS		POMS	
POMS		POMS		POMS		POMS		POMS		POMS	
POMS		POMS		POMS		POMS		POMS		POMS	
POMS		POMS		POMS		POMS		POMS		POMS	
POMS		POMS		POMS		POMS		POMS		POMS	
POMS		POMS		POMS		POMS		POMS		POMS	
POMS		POMS		POMS		POMS		POMS		POMS	
POMS		POMS		POMS		POMS		POMS		POMS	
POMS		POMS		POMS		POMS		POMS		POMS	
POMS		POMS		POMS		POMS		POMS		POMS	
POMS		POMS		POMS		POMS		POMS		POMS	
POMS		POMS		POMS		POMS		POMS		POMS	
POMS		POMS		POMS		POMS		POMS		POMS	
POMS		POMS		POMS		POMS		POMS		POMS	
POMS		POMS		POMS		POMS		POMS		POMS	
POMS		POMS		POMS		POMS		POMS		POMS	
POMS		POMS		POMS		POMS		POMS		POMS	
POMS		POMS		POMS		POMS		POMS		POMS	
POMS		POMS		POMS		POMS		POMS		POMS	
POMS		POMS		POMS		POMS		POMS		POMS	
POMS		POMS		POMS		POMS		POMS		POMS	
POMS		POMS		POMS		POMS		POMS		POMS	
POMS		POMS		POMS		POMS		POMS		POMS	
POMS		POMS		POMS		POMS		POMS		POMS	
POMS		POMS		POMS		POMS		POMS		POMS	
POMS		POMS		POMS		POMS		POMS		POMS	
POMS		POMS		POMS		POMS		POMS		POMS	
POMS		POMS		POMS		POMS		POMS		POMS	
POMS		POMS		POMS		POMS		POMS		POMS	
POMS		POMS		POMS		POMS		POMS		POMS	
POMS		POMS		POMS		POMS		POMS		POMS	
POMS		POMS		POMS		POMS		POMS		POMS	
POMS		POMS		POMS		POMS		POMS		POMS	
POMS		POMS		POMS		POMS		POMS		POMS	
POMS		POMS		POMS		POMS		POMS		POMS	
POMS		POMS		POMS		POMS		POMS		POMS	
POMS		POMS		POMS		POMS		POMS		POMS	
POMS		POMS		POMS		POMS		POMS		POMS	
POMS		POMS		POMS		POMS		POMS		POMS	
POMS		POMS		POMS		POMS		POMS		POMS	
POMS		POMS		POMS		POMS		POMS		POMS	
POMS		POMS		POMS		POMS		POMS		POMS	
POMS		POMS		POMS		POMS		POMS		POMS	
POMS		POMS		POMS		POMS		POMS		POMS	
POMS		POMS		POMS		POMS		POMS		POMS	
POMS		POMS		POMS		POMS		POMS		POMS	
POMS		POMS		POMS		POMS		POMS		POMS	
POMS		POMS		POMS		POMS		POMS		POMS	
POMS		POMS		POMS		POMS		POMS		POMS	
POMS		POMS		POMS		POMS		POMS		POMS	
POMS		POMS		POMS		POMS		POMS		POMS	
POMS		POMS		POMS		POMS		POMS		POMS	
POMS		POMS		POMS		POMS		POMS		POMS	
POMS		POMS		POMS		POMS		POMS		POMS	
POMS		POMS		POMS		POMS		POMS		POMS	
POMS		POMS		POMS		POMS		POMS		POMS	
POMS		POMS		POMS		POMS		POMS		POMS	
POMS		POMS		POMS		POMS		POMS		POMS	
POMS		POMS		POMS		POMS		POMS		POMS	
POMS		POMS		POMS		POMS		POMS		POMS	
POMS		POMS		POMS		POMS		POMS		POMS	
POMS		POMS		POMS		POMS		POMS		POMS	
POMS		POMS		POMS		POMS		POMS		POMS	
POMS		POMS		POMS		POMS		POMS		POMS	
POMS		POMS		POMS		POMS		POMS		POMS	
POMS		POMS		POMS		POMS		POMS		POMS	
POMS		POMS		POMS		POMS		POMS		POMS	
POMS		POMS		POMS		POMS		POMS		POMS	
POMS		POMS		POMS		POMS		POMS		POMS	
POMS		POMS		POMS		POMS		POMS		POMS	
POMS		POMS		POMS		POMS		POMS		POMS	
POMS		POMS		POMS		POMS		POMS		POMS	
POMS		POMS		POMS		POMS		POMS		POMS	
POMS		POMS		POMS		POMS		POMS		POMS	
POMS											